

Measurements °F

Sp1	188.1
-----	-------

Parameters

Emissivity	0.95
Refl. temp.	68 °F

2012 Freightliner with DDC 13, 12.8L engine.

62,604 miles, 3,608 Hr
 Truck used by work crews, has hydraulic crane.

Driver's complaint, crew detected an odor of rotten eggs, but could not identify root cause/source

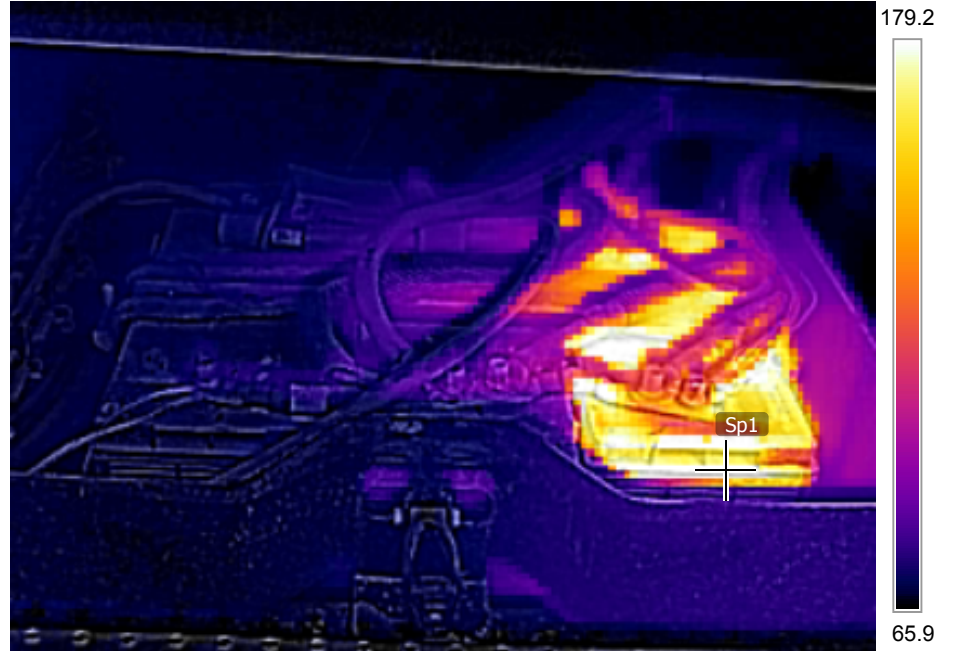
Crew drove vehicle to shop, charge gauge indicated 14.1 VDC

Pulled battery cover and captured thermal image. Note rearward battery has range of temperature, SPOT 1 at 188.1F but saw temperatures between 195 and 200F.

Checked other two batteries, voltages near 12.2 VDC, but low capacity, temperature near 70F

Replaced all three commercial series 31 batteries.

11/5/2015 4:30:29 PM



FLIR0006.jpg

FLIR E5

63962119

11/5/2015 4:30:29 PM



FLIR0006.jpg

FLIR E5

63962119